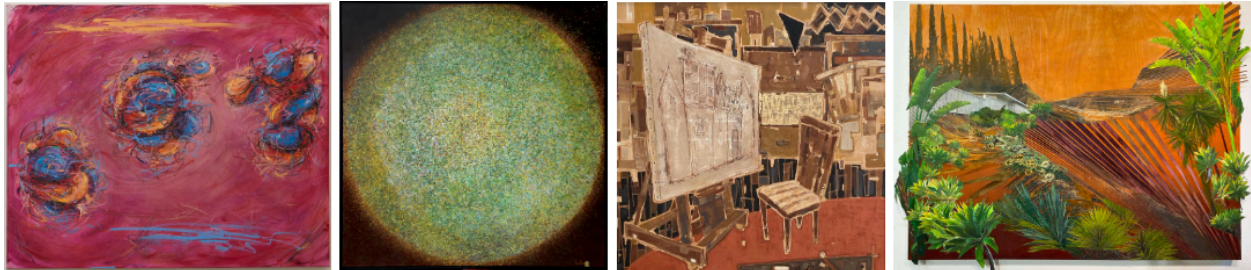


# *Spatial Divide*

Sean Crim, Tae Hue, and Kei Sugiyama

An Exhibition Exchange with Speedy Gallery

Thursday, July 25<sup>th</sup> – Saturday, August 24<sup>th</sup>



(L to R) Sean Crim, *Authenticity Series: Pink*, Tae Hue, *From the Point...Euphoria*, Kei Sugiyama, *Studio With a Red Rug*  
(Photos courtesy of Speedy Gallery), Cheryl Molnar, *Mountain View*

For our mid-summer exhibition, we're proud to present ***Spatial Divide***, a bi-coastal dialogue that engages audiences through various mediums and diverse voices. This exhibition represents a unique gallery exchange between New York City's **C24 Gallery** and **Speedy Gallery**, located in Santa Monica, California. With works representing influences from Korea, Myanmar, Japan, and in the US, New York, Atlanta, DC and Los Angeles, this international art exchange explores many facets of presence, emotionality and placemaking. Head space, inner space, outdoor space and personal space—this collection of work sees spaces as disparate ideas brought together, creating a sense of balance between our interior and exterior landscapes and inspiring introspection and creativity.

From Thursday, July 25th through August 24th, **C24 Gallery** will present selections by Speedy Gallery artists **Sean Crim**, **Tae Hue**, and **Kei Sugiyama**.

**Sean Crim** creates abstract paintings, transferring information he derives from wearing an EEG (Electroencephalography) headset that measures brain waves, monitoring his fluctuating emotional state, onto the canvas. **Tae Hue**'s incredibly detailed, large scale dot paintings depict the visions she sees during long periods of meditation, while **Kei Sugiyama**'s collages depict rooms reminiscent of people, but filled only with furnishings and the raw materials for contemplation and artistic creation.

**Speedy Gallery** will feature a solo exhibition of works by C24 Gallery artist **Cheryl Molnar**, opening on Thursday, August 8<sup>th</sup> and on view through August 31<sup>st</sup>.

**Cheryl Molnar**'s collage paintings depict surreal landscapes incorporating topographic and architectural elements from both the east and west coasts of the United States, reflecting her New York/Los Angeles upbringing. Her immersive environments evoke strong sense memories inspired by iconic, often mid-century modern constructions, familiar panoramic views and indigenous plant life.