

ALL SYSTEMS GO!

CURATED BY SUZANNE CARTE

11.10.2011 - 12.23.2011

WEST GALLERY (clockwise from entrance)



TILO SCHULZ

Tracking ~~my~~ your desire... #5, 2010
Felt, wood, natural cord
variable dimensions



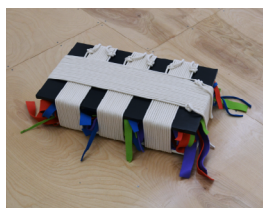
TILO SCHULZ

Tracking ~~my~~ your desire #1, 2010
felt, foam material, natural cord
4 rolls, each:
19.5 x 8 inches



TILO SCHULZ

Tracking ~~my~~ your desire... #8, 2010
Felt, wood, natural cord
variable dimensions



TILO SCHULZ

Tracking ~~my~~ your desire... #4, 2010
coated MDF boards, felt, natural cord, wood
8 x 43 x 35.5 inches



TILO SCHULZ

Tracking ~~my~~ your desire... #6, 2010
Felt, paper (coated), natural cord
33.5 x 18 x 14 inches



TILO SCHULZ

Tracking ~~my~~ your desire... #3, 2010

felt, wood, natural cord

35 x 21.5 x 19.5 inches

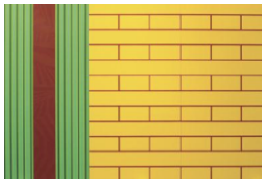


AA RUCCI

NYPDUMBOSWAT, 2011

acrylic on canvas over panel

25 x 63 inches



AA RUCCI

Brooklyn Heights Elementary, 2008

acrylic on panel

84 x 126 inches



AA RUCCI

Bridesmaid Totem, 2010-2011

acrylic on canvas over panel

84 x 72 inches



AA RUCCI

The Fall, 2008

acrylic on cast porcelain, pewter and wood

151 x 60 x 7 inches



AA RUCCI

OnceUponATimeInAmerica, 2010

acrylic on canvas over panel

32 x 56 inches



AA RUCCI

A Year Ago Today, 2008

acrylic on wood

78 x 84 x 16 inches

EAST GALLERY (clockwise from entrance)



DIEGO TOLEDO
L Room, 2007
formica, MDF
35.43 x 53.54 x 1.57 inches



DIEGO TOLEDO
Stock-stop, 2007
formica, MDF
29.53 x 23.62 x .79 inches



DIEGO TOLEDO
Rack-pack, 2007
formica, MDF
35.43 x 29.13 x .79 inches



DIEGO TOLEDO
Limits of View, 2009
pine wood, glue and electrical light source
23.62 x 10.24 x 10.24 inches



DIEGO TOLEDO
Limits of View, 2009
pine wood, glue and electrical light source
5.31 x 2.76 x 2.76 inches

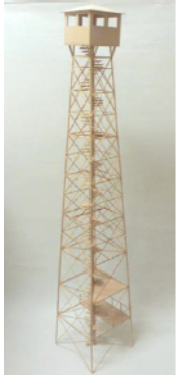


DIEGO TOLEDO

Limits of View, 2009

pine wood, glue and electrical light source

7.09 x 2.76 x 2.76 inches



DIEGO TOLEDO

Limits of View, 2009

pine wood, glue and electrical light source

51.18 x 9.06 x 9.06 inches



DIEGO TOLEDO

Limits of View, 2009

pine wood, glue and electrical light source

8.66 x 3.54 x 3.54 inches



DIEGO TOLEDO

Limits of View, 2009

pine wood, glue and electrical light source

31.5 x 11.42 x 11.42 inches



TILO SCHULZ

Tracking ~~my~~ your desire... #7

felt, foam material, natural cord

29 x 7 x 7 inches



BRENDAN EARLEY

Commune, 1971, 2011

felt tipped pen with insulation tape

21 x 20 cm



BRENDAN EARLEY

Objects in the Desert, 2009

pen on paper

21 x 20 cm

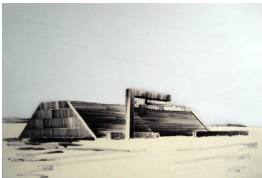


BRENDAN EARLEY

Abandoned Habitat, 2010

felt tipped pen with insulation tape

29.5 x 20 cm

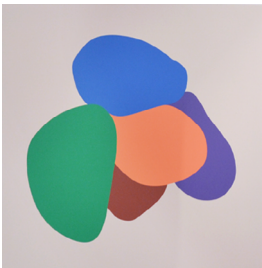


BRENDAN EARLEY

Complex One, 2009

pen on paper

21 x 20 cm

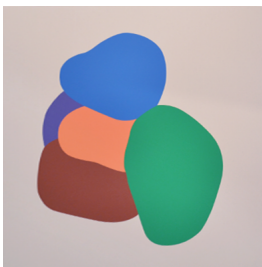


MARMAN & BORINS

Rock Painting, 2010

acrylic on canvas

66 x 66 inches



MARMAN & BORINS

Rock Painting, 2010

acrylic on canvas

66 x 66 inches



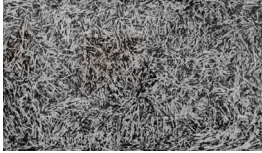
MARMAN & BORINS

Rock Sculpture, 2010

MDF, laminate, foam, fiberglass, astroturf, canvas

39 x 46 x 34 inches

66 x 66 x 12.5 inches (base)



MARMAN & BORINS

Black and White Shredded Rectangle, 2011

plexiglass, paper

45 x 90 x 3 inches



MARMAN & BORINS

Black and White Shredded Square, 2011

plexiglass, paper

45 x 45 x 3 inches



MARMAN & BORINS

Kneeling Sculpture, 2011

acrylic, MDF, vinyl, fabric

36 x 36 x 3 inches

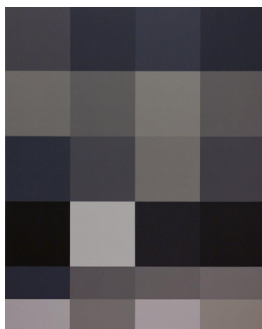


MARMAN & BORINS

Reclining Slab, 2011

acrylic, powder coated metal

53 x 15 x 25 inches

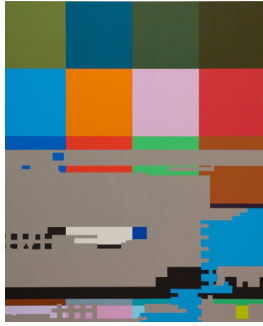


MARMAN & BORINS

Pixellated Painting, 2011

acrylic on canvas

60 x 48 inches



MARMAN & BORINS
Pixelated Painting, 2011
acrylic on canvas
60 x 48 inches



MARMAN & BORINS
Pixelated Painting, 2011
acrylic on canvas
60 x 48 inches



DIEGO TOLEDO
Depot-Plex, 2007
formica, MDF
40.16 x 40.16 x 1.57 inches